

PART OF S.E. 1/4 OF SEC. 15, T.5N., R.1W., S.L.B. & M.
SHADOW VALLEY ESTATES NO.3

LOTS 8-26

IN OGDEN CITY

SCALE 1"=60'

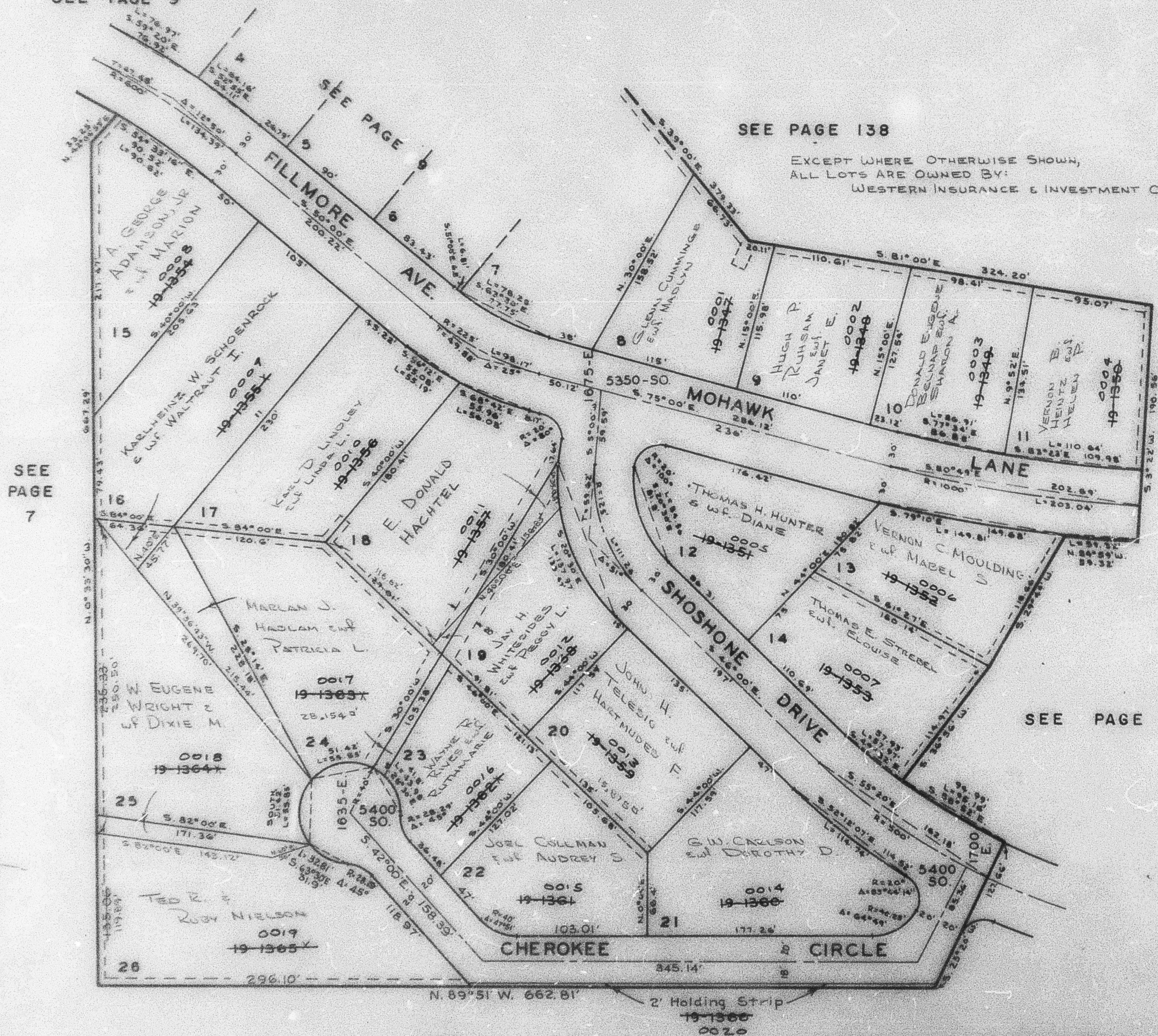
TAXING UNIT-25

PREFIX-07-010

SEE PAGE 9

SEE PAGE 138

EXCEPT WHERE OTHERWISE SHOWN,
 ALL LOTS ARE OWNED BY:
 WESTERN INSURANCE & INVESTMENT CO., INC.



SEE PAGE 7

Note: See dedication plat, Book 15 of
 Plats, page 29, for complete engineering data.
 All utility easements are 5' wide except
 as shown.

JCF 7-66